

# Order Online Now!

Chemseal Inc. specializes in the commercialization of valves, pumps, tubes and associated products in stainless steel for the food, dairy and beverage industry. Our sanitary products and components meet 3A, DIN, AISI, BPE and ASTM standards.

## Great Inventory, Great Prices

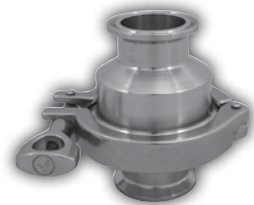


### Trynox Sanitary Single Seat Divert Valve

- Sizes 1" to 3"
- Available in 304 and 316L
- Available in 4 different configurations

### Sanitary Check Valve

- Sizes 1" to 4"
- Available in 304 and 316L
- Available with clamp ends and weld ends



### Sanitary Butterfly Valve

- Sizes 1" to 4"
- Available in 304 and 316L
- Available with clamp ends and weld ends



### Trynox Sanitary Butterfly Actuated Valve Clamp Ends

- Sizes 1" to 4"
- Available in 304 and 316L

### Reducers

- Sizes 1" to 4"
- Available in 304 and 316L
- Available with clamp ends and weld ends
- Eccentric and Concentric reducers available
- Available in 15 different combinations



Trynox® Distributed by Chemseal® Inc.

[www.chemsealinc.net](http://www.chemsealinc.net)

Phone: 888-337-0649

Email: [Sales@chemsealinc.net](mailto:Sales@chemsealinc.net)



**Chemseal**® Inc.  
Integral Solutions